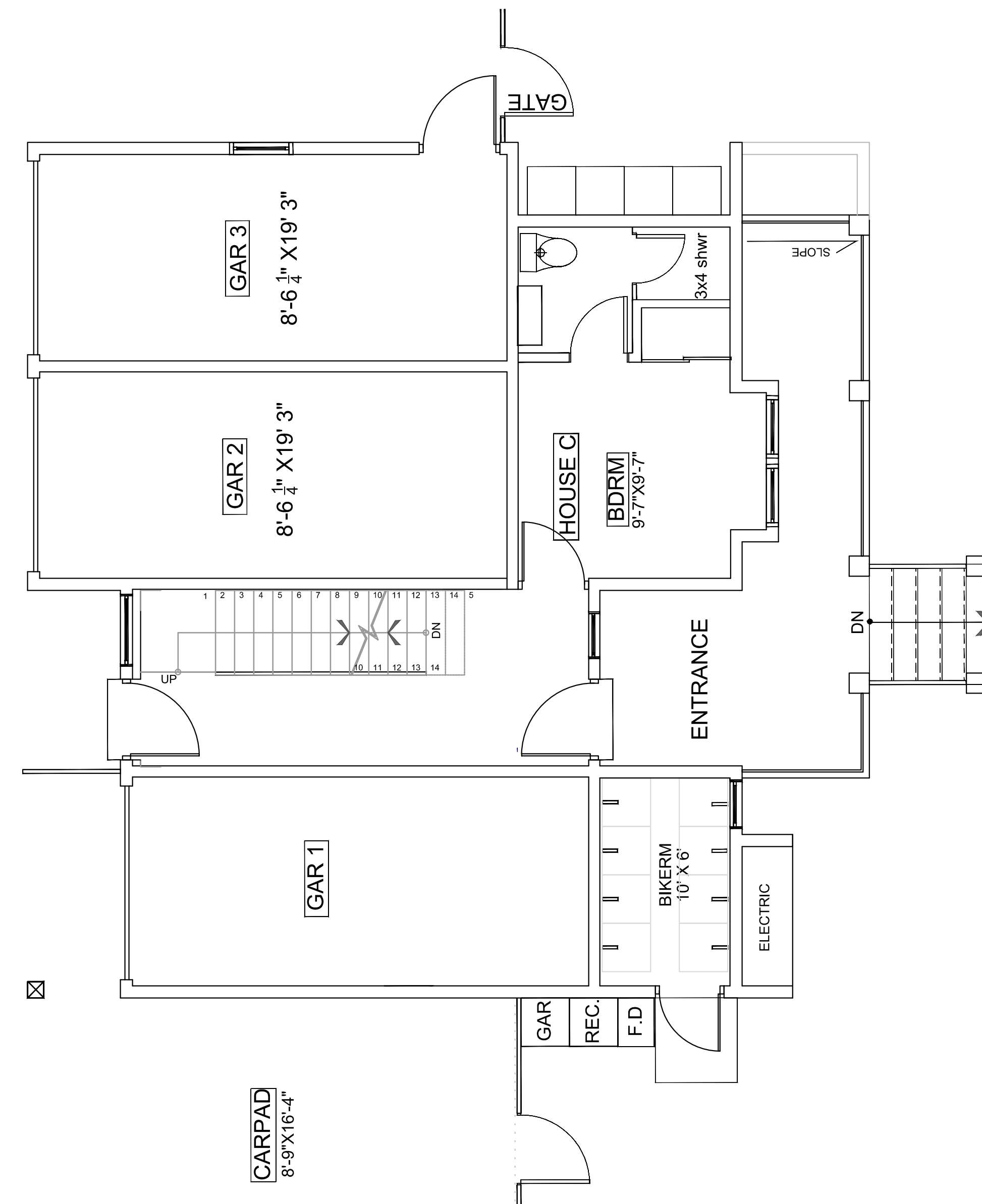


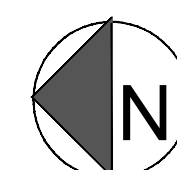
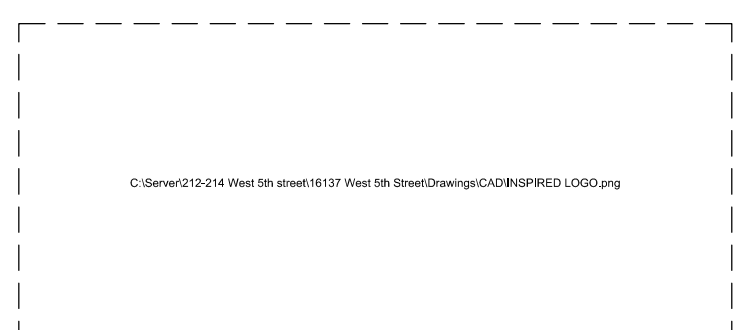
BASEMENT - EXCLUDED

BASEMENT AREA 586.72 SQ.FT



MAIN FLOOR

L1 INCLUDING GARAGE 917.41SQ.FT
VERANDA 154.93 SQ.FT



REVISION:		
No.	Issue for	DATE
1	D.P. SUB.	AUG, 2012
2	D.P. SUB.	OCT, 2012
3	D.P. SUB.	JAN, 2013
4		JUNE, 2013
5	D.P. SUB.	FEB, 2015
6	D.P. SUB.	MARCH, 2015
7	D.P. SUB.	MAY, 2015
8	B.P. SUB.	MARCH, 2016
9	B.P. RESUBMISSION	MAY 09, 2016
10	B.P. RESUBMISSION	OCT 07, 2016

5TH ST. TRIPLEX
214 WEST 5TH ST.
NORTH VANCOUVER

HOUSE C
MAIN AND BASEMENT
FLOOR PLANS

DATE:
NOV, 2013
CHECKED BY :
M.R.
DRAWN BY:
R.CH
SCALE: 1/4 = 1FT

DRAWING NO. :
A-08