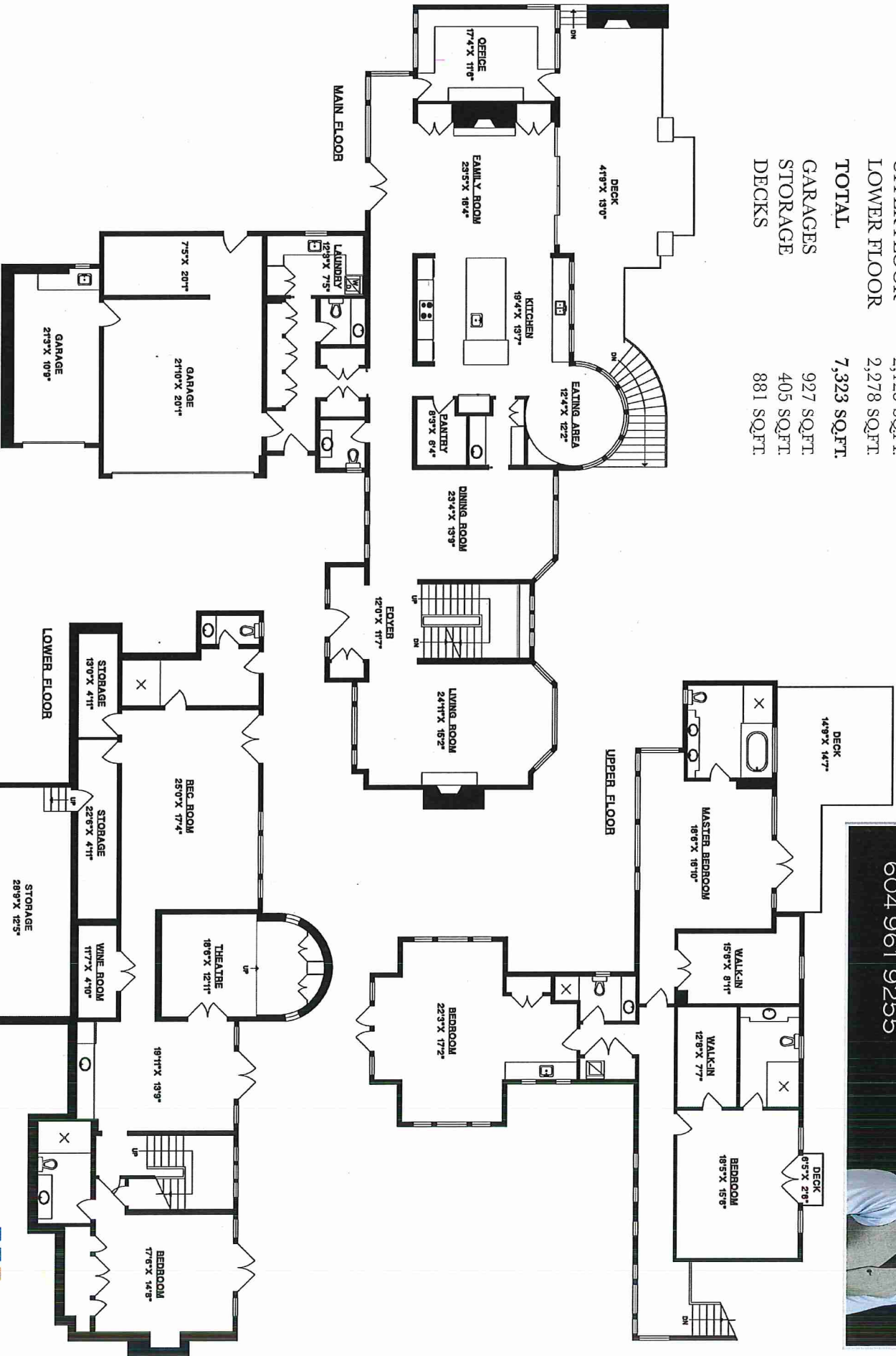


1651 MARLOWE PLACE
WEST VANCOUVER

MAIN FLOOR	2,920 SQ.FT.
UPPER FLOOR	2,125 SQ.FT.
LOWER FLOOR	2,278 SQ.FT.
TOTAL	7,323 SQ.FT.
GARAGES	927 SQ.FT.
STORAGE	405 SQ.FT.
DECKS	881 SQ.FT.



RALPH MAGLIERI
NORTH VANCOUVER • WEST VANCOUVER • VANCOUVER
TOP 1% OF REALTORS IN METRO VANCOUVER
 604 961 9255

